

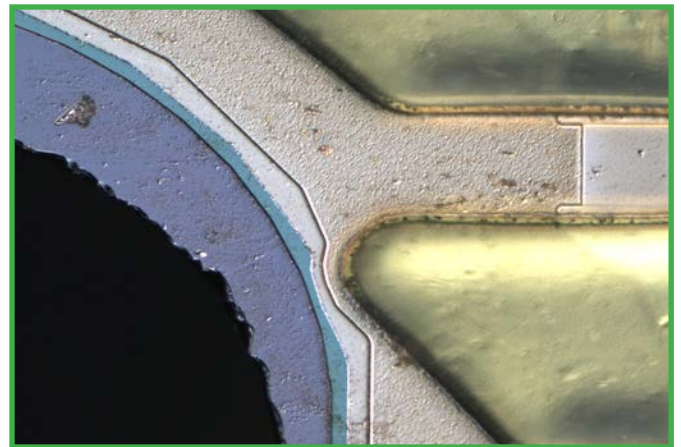
M46 Metallurgical Microscope Semiconductor Inspection

M46 RF Frame for reflected light with field diaphragm and iris diaphragm.

- Brightfield / Darkfield / Polarization / DIC
- 100w halogen illuminator
- Coaxial fine and coarse focusing with 33mm vertical travel; 0.001mm graduation; tensions adjustment
- 80-240v built in power transformer

M46 TRF Frame for transmitted and reflected light with field diaphragm and iris diaphragm.

- Brightfield / Darkfield / Polarization / DIC
- 100w halogen illuminator for reflected light
- 5w LED illuminator for transmitted light
- Condenser for transmitted light with iris diaphragm
- Coaxial fine and coarse focusing with 33mm vertical travel; 0.001mm graduation; tensions adjustment
- 80-240v built in power transformer



- Infinity Corrected Optical System
- Head: Trinocular head with erect image with eyetubes inclined at 25° beam splitter with 100/0 or 0/100 positions.
- Eyepieces: WF PL 10x/22 or WF PL 15x
- Quintuple nosepiece
- Stage: Three layer stage with 158mm x 158mm Z/Y movement.

LWD Brightfield Plan Achromat Objectives

- FMPLN5, Plan Achromat LWD 5x Objective, NA 0.15, WD 10.8mm
- FMPLN10, Plan Achromat LWD 10x Objective, NA 0.30, WD 12.2mm
- FMPLN20, Plan Achromat LWD 20x Objective, NA 0.45, WD 4mm
- FMPLN50, Plan Achromat LWD 50x Objective, NA 0.55, WD 7.9mm
- FMPLN100, Plan Achromat LWD 100x Objective, NA 0.80, WD 2.1mm



High Resolution Brightfield Semi Apo Objectives

- BF-SAPO-M5, Semi Apo Metallurgical 5x objective; NA 0.15; WD 19.5mm
- BF-SAPO-M10, Semi Apo Metallurgical 10x objective; NA 0.30; WD 10.9mm
- BF-SAPO-M20, Semi Apo Metallurgical 20x objective; NA 0.50; WD 3.2mm
- BF-SAPO-M50, Semi Apo Metallurgical 50x objective; NA 0.80; WD 1.2mm
- BF-SAPO-M100, Semi Apo Metallurgical 100x objective; NA 0.90; WD 1.0mm

LWD DB Plan Achromat Objectives

- LWD-BD-M5, Plan Achromat LWD 5X objective, NA 0.14, WD 20.5mm
- LWD-BD-M10, Plan Achromat LWD 10X objective, NA 0.25, WD 16mm
- LWD-BD-M20, Plan Achromat LWD 20X objective, NA 0.40, WD 7.8mm
- LWD-BD-M50, Plan Achromat LWD 50X objective, NA 0.55, WD 7.9mm
- LWD-BD-M100, Plan Achromat LWD 100X objective, NA 0.80, WD 2.1mm



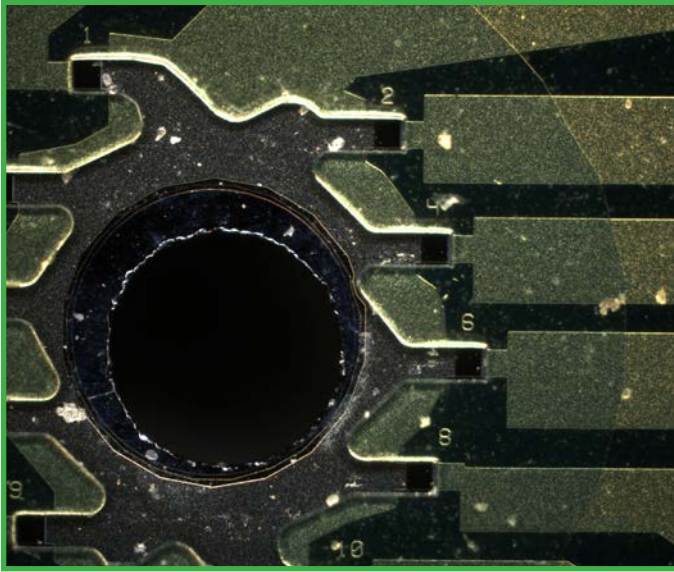
BD Plan Achromat Objectives

- Plan Epi BD5X objective, NA 0.10; WD 15mm
- Plan Epi BD10X objective, NA 0.25; WD 6.5mm
- Plan Epi BD20X objective, NA 0.40; WD 4.3mm
- Plan Epi BD50X objective, NA 0.75; WD 0.38mm
- Plan Epi BD100X objective, NA 0.90; WD 0.50mm

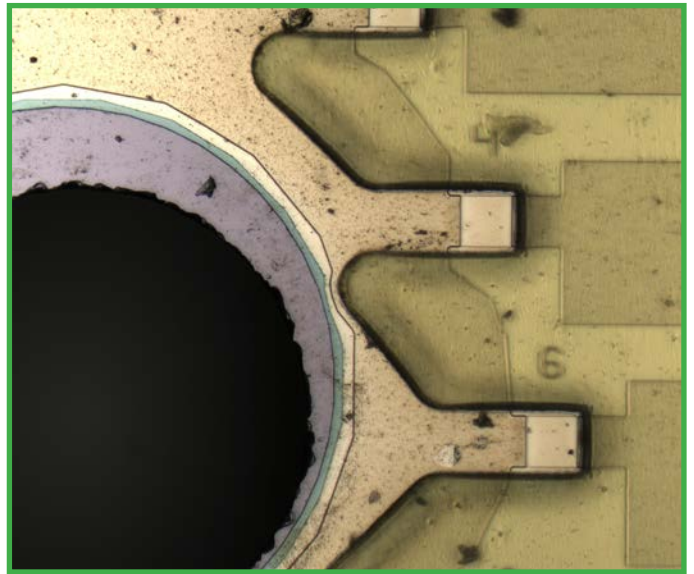
High Resolution Brightfield / Darkfield Semi Apo Objectives

- BD-SAPO-M5, Brightfield / Darkfield Semi Apo 5x objective; NA 0.15; WD 19.5mm
- BD-SAPO-M10, Brightfield / Darkfield Semi Apo 10x objective; NA 0.30; WD 10.9mm
- BD-SAPO-M20, Brightfield / Darkfield Semi Apo 20x objective; NA 0.45; WD 3.2mm
- BD-SAPO-M50, Brightfield / Darkfield Semi Apo 50x objective; NA 0.80; WD 1.3mm
- BD-SAPO-M100, Brightfield / Darkfield Semi Apo 100x objective; NA 0.90; WD 1.0mm

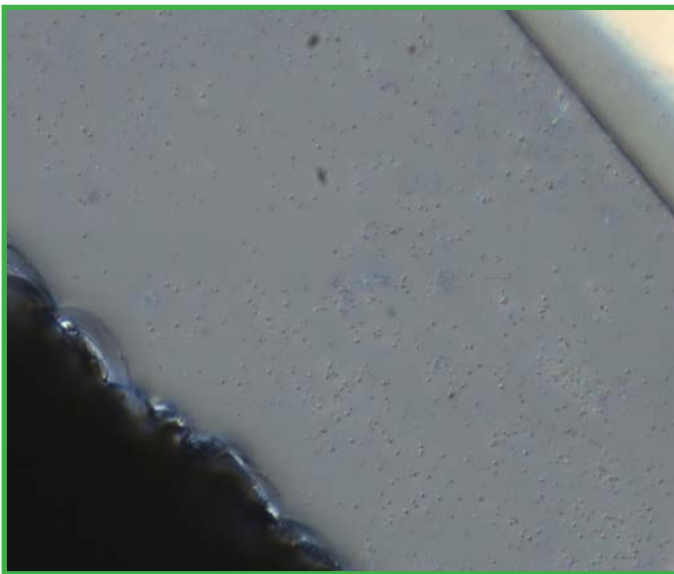
M46 Metallurgical Microscope Semiconductor Inspection Sample Images



5x Darkfield



10x Brightfield



100x DIC